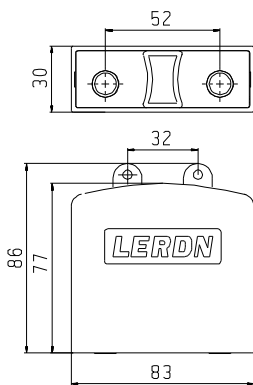


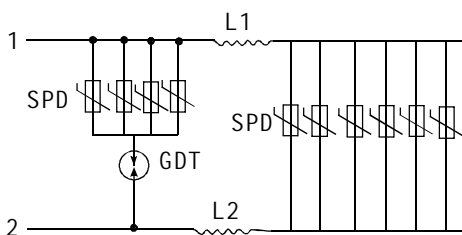
LDY - CATV



Appearance and installation dimension



Schematic circuit diagram



Application range

LDY - CATV network lightning protection devices are applicable to the lightning and overvoltage protection of CATV devices, such as amplifier, receiver, etc. which also can be used to protect the signal channel of the television. (Option from standard IEC61643-21 and GB50343)

Main features

- ☆ High current capacity, low residual voltage
- ☆ Having two class protection (B+C), strong protection ability, high reliable performance.
- ☆ Various conductor for selection, strong adaptability ability.
- ☆ Modularization design, free grounding, convenient for installation and replacement
- ☆ Installation in series, providing omnibearing protection covering signal channel, and all-protection covering phase line and central line, introducing inner potential balance principal, free grounding, repeatedly used after several lightning.

Main technical data

Type	LDY-CATV
Nominal working voltage U_n V	60V
Max. continuous Voltage U_c V	90V
Voltage protection level U_p V	<250V
Part No.	088501
Nominal discharge current I_n (8/20 μ s) kA	15
Max. Discharge current I_{max} (8/20 μ s) kA	30
Connection model	N-pin thread connection
Protection form	two class synthetic protection (B+C)
Enclosure material	ABS
Installment model	upward erect suspension or screw fixation
Working frequency	0-1000MH
Insertion loss	0-550MHz: ≤ 0.5 dB 550-1000MHz: ≤ 0.8 dB

Installment specification

1. The protector connected in serial between the signal channel and the protected device.
2. Connect the input terminal to the signal channel, and the output terminal to the protected device, the input and output terminals without direction and free for option.
3. Connect shield wire of the data line to the equalizing ring of the lightning protection system
4. Upward erect installment, inversion prohibited, avoid rainwater reverse irrigation